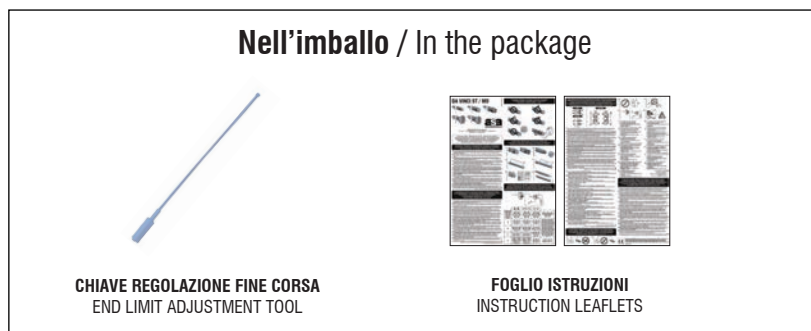


Motore tubolare con finecorsa meccanico idoneo per applicazioni su tapparelle, tende oscuranti e tende da sole.
Tubular motor with mechanical end limit switch suitable for rolling shutters, screens and awnings.

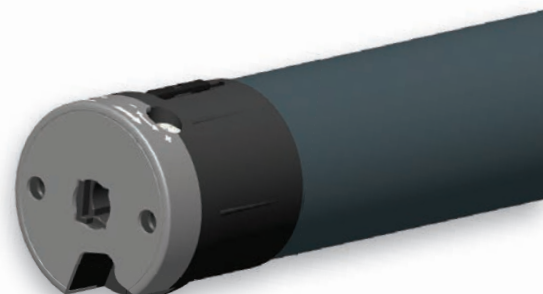
CONFIGURAZIONE IMBALLO / PACKAGE CONFIGURATION:



- Imballo singolo brand ASA / Single package ASA branded
- Testa standard 2 fori / Standard head 2 holes
- Chiave regolazione finecorsa / End limit adjustment tool
- Foglio istruzioni brand ASA / Instruction leaflets ASA branded

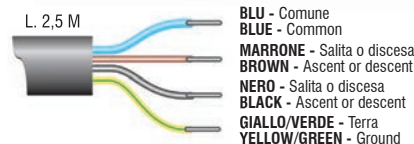
(I) (GB) (F) (D) (E) (P) (PL) (H) (NL) (RO) (GR) (CZ) (TR) (SA)

DIMENSIONI MOTORE / MOTOR DIMENSIONS:



CARATTERISTICHE TECNICHE / TECHNICAL FEATURES:

- Alimentazione / Power supply: 230 V ~ / 50 Hz
- Tipologia cavo / Cable type: H05 VVF 4 x 0,75 Bianco / White - Lunghezza / Length 2,5 m
- Grado di protezione / Protection rating: IP44
- Certificazioni / Certifications: CE - VDE - NF
- Made in Italy



CODICE CODE	DESCRIZIONE DESCRIPTION	COPPIA TORQUE	VELOCITÀ SPEED	GIRI FC LS ROUNDS	ASSORBIMENTO CONSUMPTION	LUNGHEZZA LENGTH	PESO MOTORE MOTOR WEIGHT
2240211	DAVINCI 50 ST 6/32 G1 A1 B1	6 Nm	32 Rpm	28	120 W	523 mm	1,74 Kg
2240215	DAVINCI 50 ST 6/17 G1 A1 B1	6 Nm	17 Rpm	28	100 W	523 mm	1,68 Kg
2241573	DAVINCI 50 ST 10/17 G1 A1 B1	10 Nm	17 Rpm	28	120 W	523 mm	1,72 Kg
2242297	DAVINCI 50 ST 15/17 G1 A1 B1	15 Nm	17 Rpm	28	150 W	523 mm	1,77 Kg
2243680	DAVINCI 50 ST 20/17 G1 A1 B1	20 Nm	17 Rpm	28	190 W	573 mm	1,89 Kg
2244137	DAVINCI 50 ST 25/17 G1 A1 B1	25 Nm	17 Rpm	28	200 W	573 mm	1,93 Kg
2245537	DAVINCI 50 ST 30/17 G1 A1 B1	30 Nm	17 Rpm	28	240 W	573 mm	1,98 Kg
2246154	DAVINCI 50 ST 35/17 G1 A1 B1	35 Nm	17 Rpm	28	240 W	573 mm	1,98 Kg
2247455	DAVINCI 50 ST 40/17 G1 A1 B1	40 Nm	17 Rpm	28	240 W	573 mm	1,98 Kg
2248101	DAVINCI 50 ST 45/12 G1 A1 B1	45 Nm	12 Rpm	28	240 W	573 mm	1,98 Kg
2249452	DAVINCI 50 ST 50/12 G1 A1 B1	50 Nm	12 Rpm	28	240 W	573 mm	1,98 Kg